



# Stanilite and Nexus Introduction

# STANILITE – THE BRAND

Stanilite®

## STANILITE: A BRIEF HISTORY

- Designing Emergency and Evacuation Lighting Systems in Australia for 40 years
- Local R&D, local engineering, local manufacture, local assembly
- Australian Design Award winner for the Quickfit mounting bracket
- “Bespoke” solutions capability
- A pioneer in the successful application of wireless technology in Emergency Lighting, employing patented technology
- The Market Leader, with more than 40% share, dominant in the “premium project” and monitored systems sector

# STANILITE – THE BRAND

Stanilite®

## WHY EMERGENCY LIGHTING?

- Emergency Lighting is only included in commercial buildings because the Law dictates that it must be
- Regulatory framework in Australia includes:
  - The Building Codes Board: Responsible for the “Building Code of Australia” (BCA)
  - Standards Australia: Responsible for the technical standards applicable to emergency lighting
  - Building Certifiers: Responsible for approval of new commercial premises prior to occupation
  - Fire & Rescue Services: Check on compliance with testing regimes

# NEXUS RF



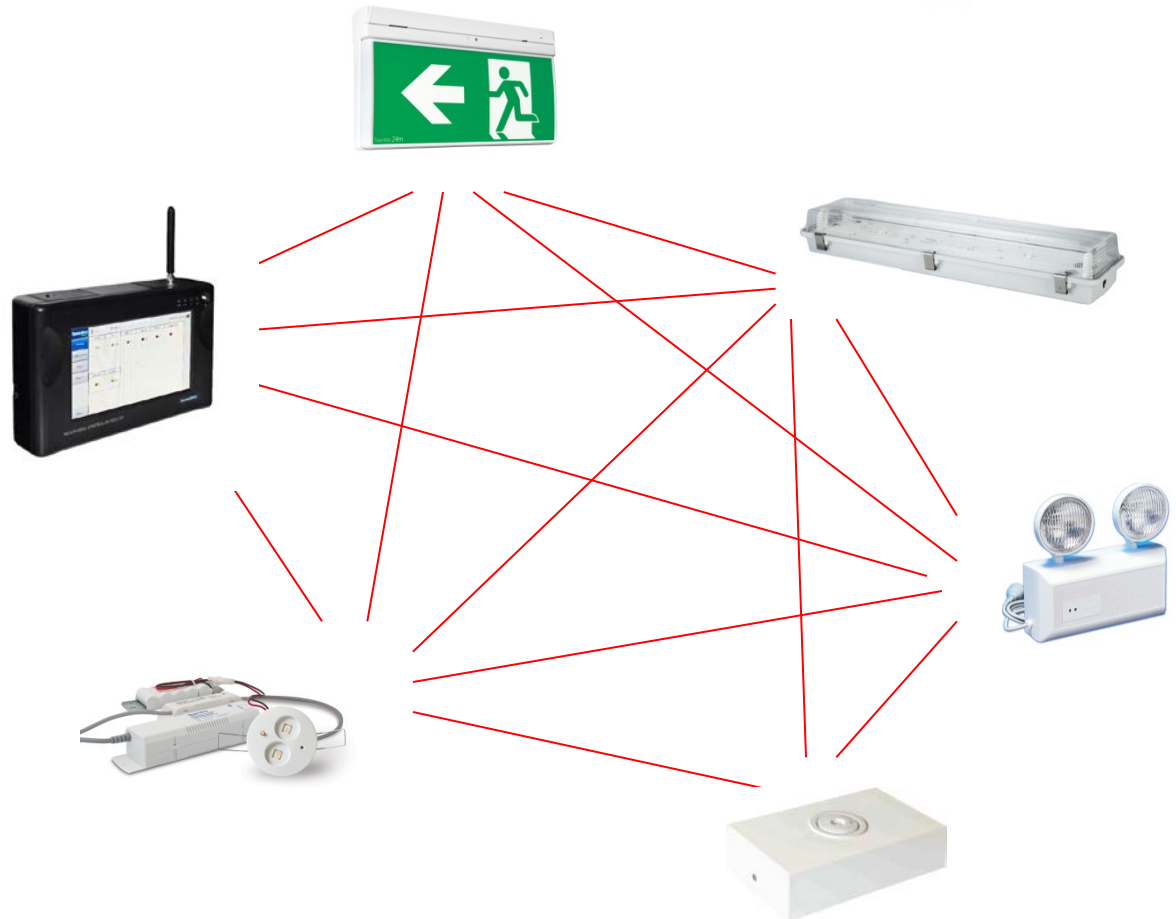
## A BRIEF HISTORY

- Nexus RF (Radio Frequency) launched into the Australian market in 2007
- Over 450 major facilities including Airports, Hospitals, Office Towers, Universities, Defence Sites and Shopping Centres
- Unequalled success in simplicity and financial advantage against other systems in renovation work and multi-building facilities
- Reduced installation and networking
- Reliability of Nexus RF product due to rigid procedures in our factory and during the project

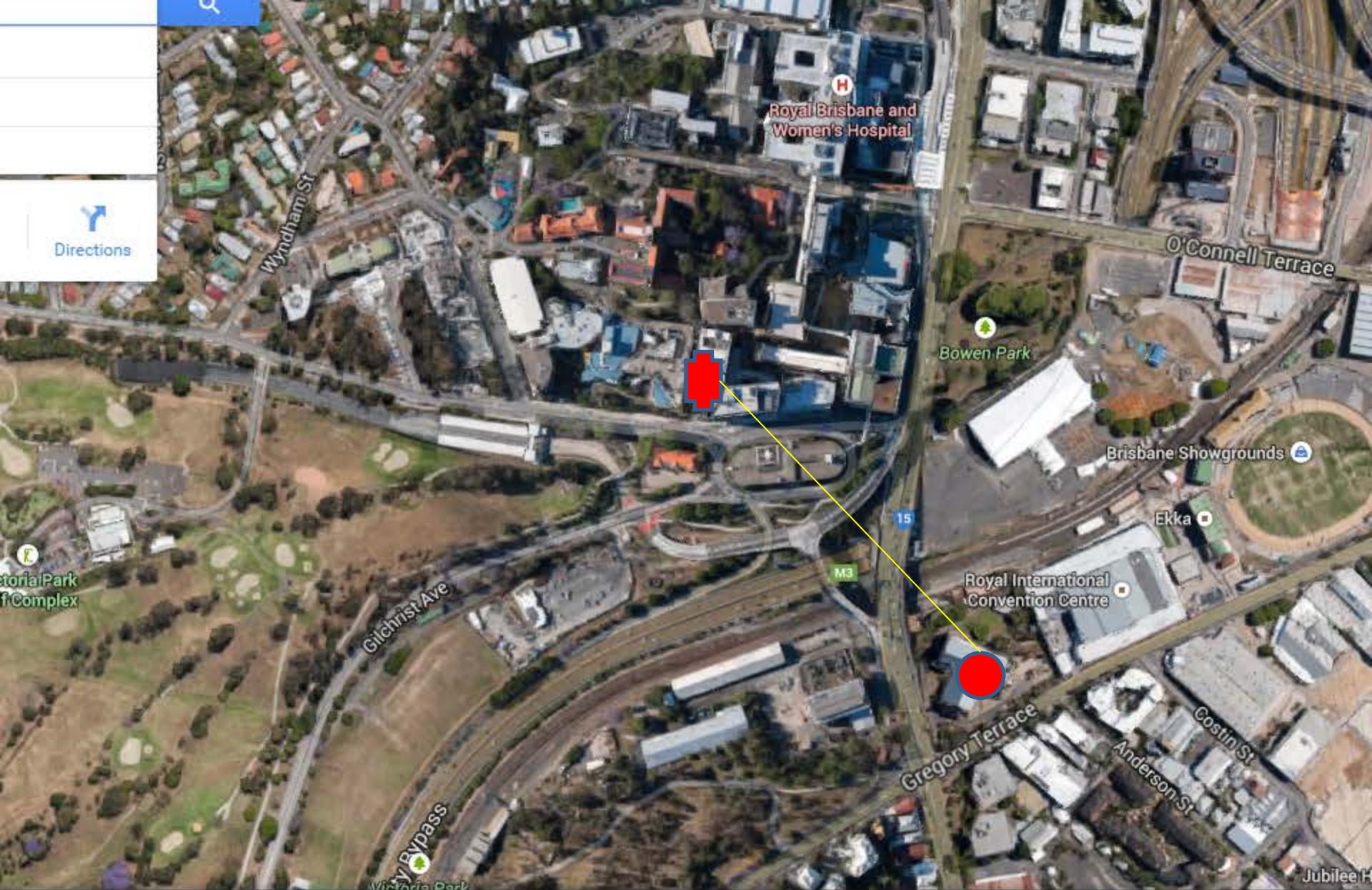
# NEXUS RF



## Wireless Mesh Networking







Royal Brisbane and Women's Hospital

Bowen Park

Brisbane Showgrounds

Ekka

Royal International Convention Centre

Gregory Terrace

Costin St

Anderson St

Jubilee H

Directions

# NEXUS RF

## THE KEYS TO SYSTEM PERFORMANCE:

- Automatic network formation
- Nodes capable of communicating with neighbouring nodes
- 915-928 MHz allows high penetration and reduced competition for bandwidth
- Proprietary wireless communications protocol
- Optical channel selection, error correction
- Unaffected by the quality of cable installation
- Self repairing system

# PA Hospital Building 1

Units in domain  
Routers in domain  
Domain tools  
Commissioning  
Emergency light testing  
Reports

SPUS

Total	Online	Offline	Maintenance	Retest	Test Due	Uncommission	2Day Offline	Duplicate Spuid
1665	1650	15	4	18	28	8	5	1

ROUTERS

12	13	14	15	16	17	18	19	20	21
109	79	10	113	120	86	109	27	76	121
22	23	24	25	26	27	28	30	31	200
45	76	27	112	84	124	106	37	11	57
201									
121									

GROUPS

	Group ID	Name	Schedule Test	Units
⚙️	0	Defaults Group		8
⚙️	1	BASEMENT		216
⚙️	2	T4 TUNNEL		40
⚙️	3	T6 TUNNEL		10
⚙️	100	GROUND		307
⚙️	101	LEVEL 1		273
⚙️	102	LEVEL 2		177
⚙️	103	LEVEL 3		139
⚙️	104	LEVEL 3 THEATRES & VHOT		47
⚙️	105	LEVEL 4		217



# PA Hospital ED Department

28-09-2015, 09:06

Units in domain  
Routers in domain  
Domain tools  
Commissioning  
Emergency light testing  
Reports

1 PAH EMERGENCY DEPT

SPUS

Total	Online	Offline	Maintenance	Retest	Test Due	2Day Offline	Duplicate Spuid
734	730	4	7	0	0	2	1

ROUTERS

1 2 3 4 5 6 7 8 9

2 126 64 95 74 113 125 6 125

GROUPS

	Group ID	Name	Schedule Test	Units
⚙️	0	Defaults Group		0
⚙️	1	LOWER GROUND #1		48
⚙️	2	LOWER GROUND #2		24
⚙️	3	GROUND #1		34
⚙️	4	GROUND #2		42
⚙️	5	ED MAPU		101
⚙️	6	ED MENTAL HEALTH		60
⚙️	7	ED IMAGING		86
⚙️	8	ED AMBULATORY CARE		97
⚙️	9	ED ACUTE		68
⚙️	10	RADIATION ONCOLOGY GROUND		133
⚙️	11	RADIATION ONCOLOGY LOWER GROUND		23

8:39 AM 28/09/2015

# Nexus RF

## Nexus NAC - 2

Nexus RF controlling unit

Controls the first 90 fittings of a project

Remembers the whole data base

Can be web browsed or linked to LAN

No PC required

No program required

Remote access via any web browser capable device.

Simple firmware upgrade

Connection to routers via Ethernet or LAN connection



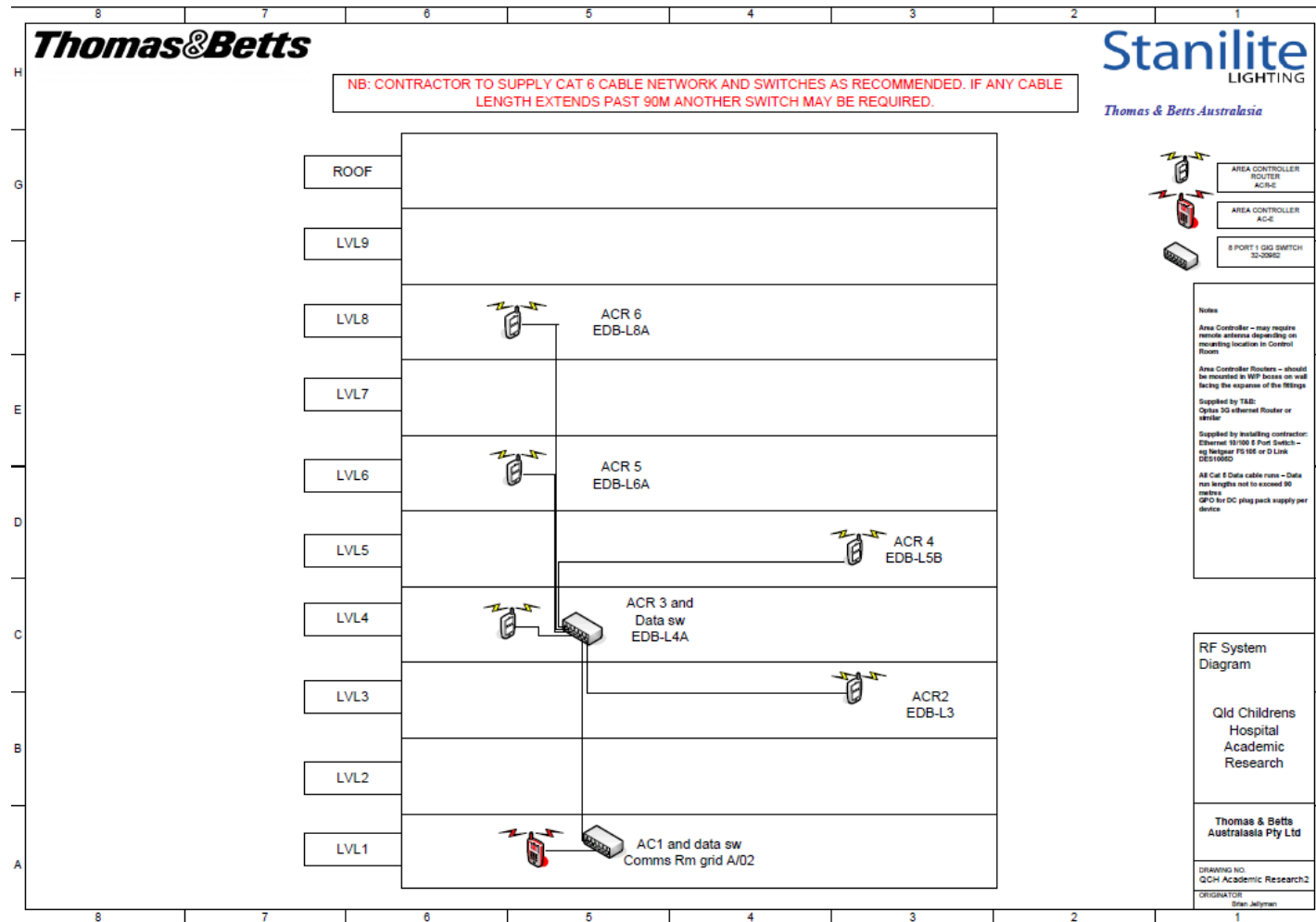
# Nexus RF

## Nexus NACR -1

- Has all the capabilities as the area controller 1 required for every 90 fittings
- Remembers the whole data base
- Can be web browsed or linked to LAN
- Simple firmware upgrade
- Connection to area controller or routers via ethernet or LAN connection

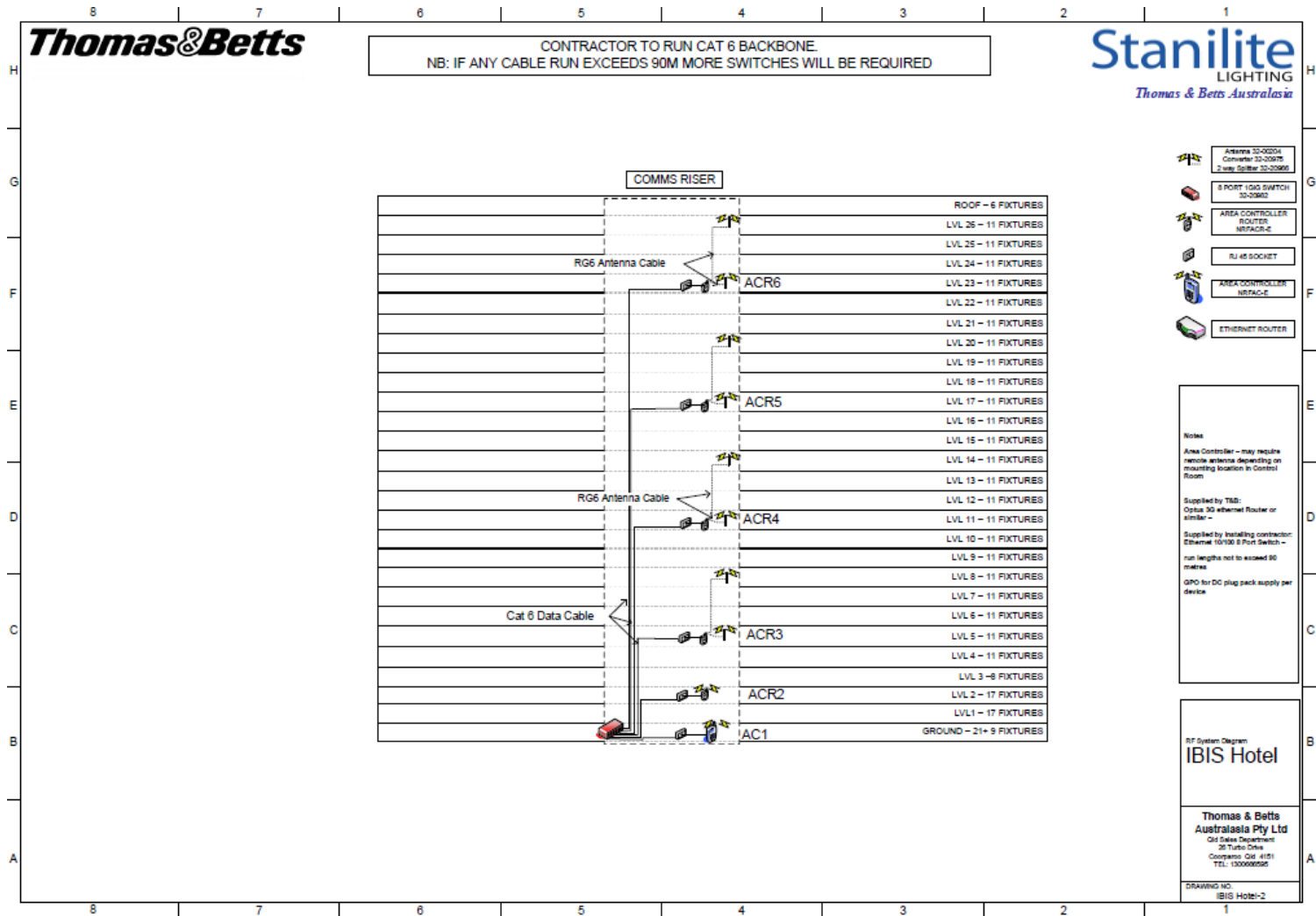


# Network Diagram 11 Storey Medical Research Centre





# Network Diagram Base Building 28 Storey Office Tower



# CASE POINT 1

## BRISBANE MARKETS UPGRADE:

Project upgrade emergency lighting across 22 buildings over 3 sites and to centralise all emergency lighting reporting and testing.

### **Nexus Hybrid RF**

\$250K

\$250K

Included

\$5,000

\$255,000

**vs**

vs

vs

vs

vs

vs

### **Other Brand**

\$210K (wholesale price)

\$270K (complete package)

\$9K (commissioning labour)

\$12K (plant equipment hire)

\$291K (installed)

# CASE POINT 2

**PRINCESS ALEXANDRA HOSPITAL:** (30 year old site with 5,000 emergencies)

Existing Powerline Carrier System is not able to perform tests due to ongoing issues from installation 13 years ago. Client is spending \$140K per year in repairs. Poor support.

Solution: Install a series of Nexus Hybrid RF Routers throughout the facility. After every 6-month emergency test, install Nexus fittings in place of failed fittings.

Commission: Repeat every 6 months,

Current Status: 50% complete

# CURRENT NEXUS RF SITES

## HOSPITALS

- Bennalla Base Hospital
- Queensland Children's Hospital
- Princess Alexandra Hospital
- QCH Central Energy Facility
- QCH Academic and Research Facility
- Rockhampton Hospital
- Mater Hospital
- St Andrews Toowoomba
- Ballie Henderson Hospital Toowoomba
- Cairns North Hospital
- Westmead Children's Hospital Car Park
- Ronald MacDonald House
- Prince of Wales Hospital
- Mona Vale Hospital
- Napean Hospital
- St Vincent's Mater Hospital
- Shell Harbour Hospital
- Quirindi Hospital
- Port Macquarie Hospital
- Orange Base Hospital
- Narrabri Hospital
- Moree Hospital
- Manning Base Hospital
- Manilla Multi Purpose Service & Health One
- Lismore Base Hospital
- Gunnedah Hospital
- Gosford Private Hospital
- Glen Innes Hospital
- Concord Hospital
- Boggabri Hospital
- QIMR Bancroft



# CURRENT NEXUS RF SITES

## FACILITIES

- Harvey Norman Stores
- Stanwell Rockhampton Power Station
- Cairns Courthouse
- M&A
- Terrica Place 3 towers
- 295 Ann Street
- Alice Springs Airport
- Alice Springs Casino
- Australian Stock Exchange
- Cairns Courthouse
- Carindale Shopping centre
- Carrara Stadium
- Commonwealth Law Courts
- David Jones Toowong
- DHS Victoria
- Ipswich City Council
- Lotus Glen Correctional Centre
- Brisbane Domestic Airport
- Toyota Head Office
- Sydney International Airport
- Clifford Gardens Shopping Centre
- River link Shopping Centre
- Runaway Bay Shopping Village
- QIMR
- 144 Qrail Metropolitan Stations
- Indooroopilly Shopping Centre
- Townsville Airport
- Virginia Bus Station
- Newcastle Council
- Westrac Tomago
- Sydney Paddy's & Flemington Markets
- St George Leagues Club

# CURRENT NEXUS RF SITES

## EDUCATION

- Southern Cross University Lismore
- Sunshine Coast University
- University of Southern Queensland
- University of Queensland Global Change
- All Saints Merrimac
- Erindale College
- University of Western Sydney
- Uni of Sydney
- Ourimbah University
- Newcastle University
- Macquarie University
- Logan Tafe
- P.A.C.E.
- Townsville Trade Training Centre
- Pimlico TAFE
- Lourdes Hill College

## AGED CARE

- RSL Care Yeppoon
- Azure Blue Carina
- Rockhampton Nursing Home
- Port Macquarie Aged Care

# ***$\rho$ -Range***

# PQFLEDP

## PQFLEDP Quickfit Exit

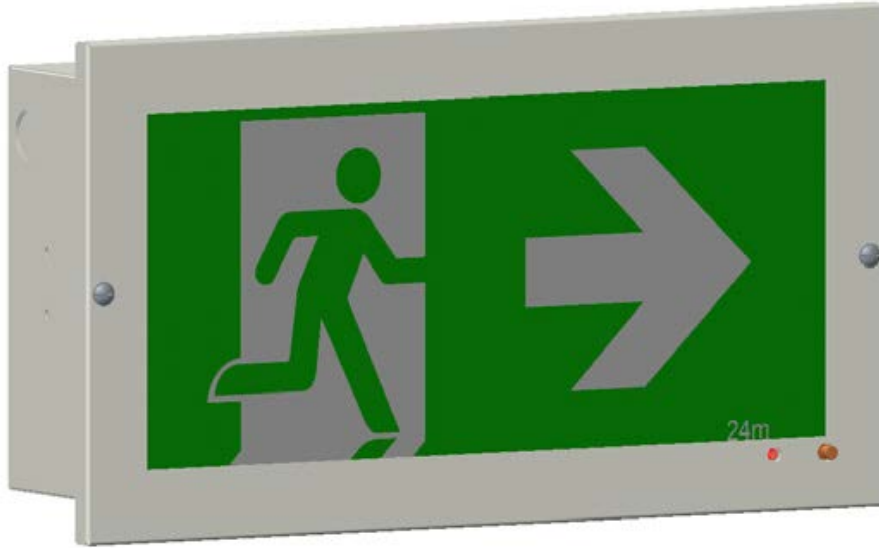
### Features:

- Quickfit® unique steel slide connect bracket for quick installation and easy maintenance
- LED technology 100,000 hours plus lamp life
- One Box solution
- Universal wall/ceiling mounting, can also be rod or wire suspended
- Advanced technology Lithium Iron Phosphate battery for long life and low maintenance
- Advanced pulsetime battery charging
- Low power consumption and LED light source for reduced operation and maintenance costs
- Nexus® monitored, either cabled or wireless
- Total Power Consumption 3.2 watts
- 5 year warranty





# PLRWLED-1



## Features

Slim, elegant and easy to maintain  
LED technology 50,000 hours plus lamp life

Large terminal block (16mm<sup>2</sup>) for easy wiring

Advanced PulseTIME® dual rate battery charger with high temperature NiMH batteries

Cable entry at either end of base

Option - Standard, Nexus® LX monitored or Nexus RF monitored

Total Power Consumption 2.84w

## Classification

24 meter viewing distance only.

# PLQLEDP



## Features:

- Architecturally pleasing slim line design
- Quickfit® unique steel slide connect bracket for quick installation and easy maintenance
- LED technology 100,000 hours plus lamp life
- High emergency classification
- Includes all pictograph diffuser options
- Universal wall/ceiling mounting, can also be rod or wire suspended
- Advanced technology Lithium Iron Phosphate battery for long life and low maintenance
- Advanced pulsetime battery charging
- 2.4 watts total power consumption and LED light source for reduced operation and maintenance costs
- Retrofit capability; fits into any existing Quickfit mounting bracket
- 5 year warranty

## Classification

C0 D3.2

C90 E2

# PWQFLEDP



## Features:

Unique steel Quickfit™ mounting bracket that provides strength and enables quick and easy maintenance  
PerpetuLED™ LED technology 100,000 hours plus lamp life

Advanced PulseTIMETM dual rate battery charger with high temperature NiCad batteries

UV stabilised vandal resistant polycarbonate cover or high impact chemical resistant acrylic cover option

Option - Standard, Nexus LX monitored or Nexus RF monitored (see separate technical data sheet)

Can be wall or ceiling mounted and optional bracket kits available for strengthened wall and cantilever mounting

Total Power Consumption 3.9w

## Classification

C0 D3.2

C90 D3.2

# PLRLEDP



## Features:

- Architecturally pleasing slim line design
- Recessed Style suitable for 6mm-19mm ceiling
- LED technology 100,000 hours plus lamp life
- High emergency classification
- Includes all pictograph diffuser options
- Advanced technology Lithium Iron Phosphate battery for long life and low maintenance
- Advanced pulsetime battery charging
- 2.4 watts total power consumption and LED light source for reduced operation and maintenance costs
- Retrofit capability; fits into any existing Quickfit mounting bracket
- 5 year warranty

## Classification

C0 D3.2

C90 E2

# VPQLEDP



## Features:

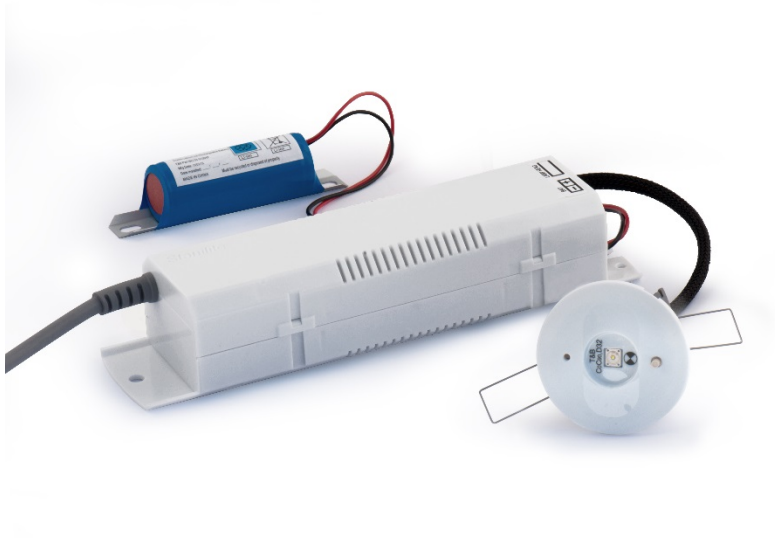
- IK9 mechanical impact resistance
- Vermin resistance
- Unique internal steel slide connect bracket for quick installation and easy maintenance
- LED technology 100,000 hours plus lamp life
- Strong steel body and end cap
- Anti-tamper cover screws
- Universal wall/ceiling mounting
- Includes all Pictograph diffuser options for single or double sided installation
- Advanced technology Lithium Iron Phosphate battery for long life and low maintenance
- Advanced pulsetime battery charging
- Low power consumption and LED light source for reduced operation and maintenance costs
- Total Power Consumption 3.2W
- 5 year warranty

## Classification

C90 E1.25

C0 E1.25

# SF1LEDP



## SFNRF1LEDP Spitfire

### Features:

LED technology 100,000 hours plus lamp life

Single or dual LED option

Superior photometric D40 classification 1LED  
Advanced technology Lithium Iron Phosphate battery for long life and low maintenance

Advanced pulsetime battery charging

Low power consumption and LED light source for reduced operation and maintenance costs

Nexus® monitored, either cabled or wireless

5 year warranty

Total power consumption under 1 watt



# SFB1LEDP



## SFBNRF1LEDP Spitfire

### Features:

LED technology 100,000 hours plus lamp life

Single or dual LED option

Superior photometric D40 classification

Advanced technology Lithium Iron Phosphate battery for long life and low maintenance

Advanced pulsetime battery charging

Low power consumption and LED light source for reduced operation and maintenance costs

Nexus® monitored, either cabled or wireless

5 year warranty

Total power consumption under 1 watt

# PRB220MDWG2P



## Features:

Detection angle 120°

Detection zone 360°, 8m distance at 2m to 3m height

High energy-efficient LED lamp tube, consumes only 3W in standby mode

Motion sensor “on” time 2 minutes after last detection

Luminous flux with both lamps on: - 3,400 lumens at full power and 400 lumens in standby

Colour temperature 4,000 - 4,500K, RA>80

LED lamp tube with integral passive infrared (PIR) motion sensor, lamp life 30,000 hours

Emergency light provided by integral LED Spitfire®, in single or dual LED configuration

Features two independent light sources for general illumination, ensuring there is always light available in the event of a failure

Advanced technology Lithium Iron Phosphate battery for long life and low maintenance

Advanced pulsetime battery charging

Low power consumption and LED light source for reduced operation and maintenance costs

- Designed for ceiling mounted applications
- Nexus® monitored, either cabled or wireless
- 5 year warranty

# SF2X2LEDBAT



## Features:

LED technology 50,000 hours lamp life  
High emergency classification and low maintenance cost - ideal for warehouse, supermarket, factory, carpark and open areas

High temperature NiCad batteries

Large terminal block (16mm<sup>2</sup>) for easy wiring

Available in Standard, Nexus® LX monitored or Nexus RF monitored

Wall or ceiling mounted

Maintained versions can be utilised for after hours and security lighting and can also be used to provide lighting during general lighting turn to delay or restrike  
Protective wire guard available





End of Presentation - Thank you.