



# Sync Energy in the home



## Worldwide Sales Coverage

Sync Energy is backed by the worldwide support structure of Luceco Group, a £230M+ Electrical Power and Lighting business, with offices globally situated within London, Jiaxing, Barcelona, Dubai and Mexico.

With a proven, trusted and reliable supply chain, Luceco has large warehousing facilities in Telford (148,000m<sup>2</sup>) as well as specialist state-of-the-art manufacturing facilities in Mansfield UK (52,000m<sup>2</sup>) and Jiaxing, China (73,000m<sup>2</sup>). All facilities are governed by strict quality control procedures and adhere to ISO9001 and 14001.

Luceco Group consists of market leading brands that major in innovation and focus on energy efficiency, style and ease of installation, enabling sustainable living as an everyday choice for all.



## Our Brands



## Creating a sustainable future

Operating sustainably is a key part of Luceco Group's strategy and is reflected within our Purpose, Mission and Culture, where we have made sustainability a central pillar of the Group's success. Our product portfolio, combined with our business model and experience, puts us in a strong position to help create a sustainable future for all.

Our immediate targets have focused on realigning our product portfolio to concentrate on the sale of low carbon products, ensuring the plastic we use is recycled and further that the packaging of the products we sell is recyclable.

Whilst we recognise there is more to do, our operations continue to offer one of the lowest operational carbon footprints in our industry and we are continuing to progress our sustainability agenda moving forwards.

### Our Purpose

Our purpose, and our mission, is to create sustainable and innovative solutions that enable our customers to make a positive impact on the environment.

### Our Mission

Our mission is to provide the best products and solutions while prioritising sustainability, energy efficiency, and user experience.

### Our Culture

Our culture at Luceco Group is defined by innovation, sustainability, and collaboration. We embrace forward-thinking and are dedicated to approaching our work with integrity

and professionalism to achieve the highest ethical standards.

Luceco is dedicated to achieving net zero and tackling climate change through innovative products and collaboration with suppliers and consumers in the electrified tech industry.

Luceco understands the ambition and vision of its customers with a sustainable focus at the forefront and share the goals of a carbon-free planet for future generations. Luceco's commitment to net zero goes beyond product development, to business operations and through to its culture and people.



# Sync Energy in the Home

## One Connected Solution

At Sync Energy, we believe that sustainability should be simple. That's why we've combined smart design with effortless usability to create a Sync Energy whole home solution, with a range of products designed to help you take control of your energy.

From Hybrid Inverters and Battery Storage to Solar Power Diverters and EV Chargers, every solution has been thoughtfully engineered to be easy to install, intuitive to use, and seamlessly connected through the Sync Energy App, the only platform you'll need for total home energy management.

Whether you're looking to harness excess solar power, optimise off-peak tariffs, or simply run a more energy-efficient home.

Sync Energy makes living sustainably easier, smarter and more accessible for everyone.





### Flexible Solutions

A flexible and scalable Home Energy Management solution, Flow is designed to optimise sustainable energy and storage. The Flow Range can be configured to suit a wide range of property types and energy needs, with a choice of 3.6kW or 6kW Hybrid Inverters and modular Battery Storage expandable up to 35.84kWh.

### Effortless Installation

Every detail of the Sync Energy Flow system has been designed to make installation quicker, easier, and neater. From hidden battery handles that simplify lifting and positioning, to plug-and-play connectors that reduce wiring time for installers. With a dedicated wiring area between the inverter and batteries, this allows clean and efficient cabling, all supported by a mounting base with adjustable feet to ensure a perfectly level setup for even or uneven surfaces.

### Future Ready

Suitable for new installations or retrofit projects, with or without solar (PV), the system provides future-ready energy management with remote monitoring and control via the Sync Energy App.

### Sync Energy Connectivity

Our intuitive, dedicated Sync Energy App has been designed to work seamlessly with our home energy management system, bringing everything together in one place. With Sync Energy, there's no need for additional third-party apps. You can monitor, manage, and control your home energy all from a single app, including our Tariff Sense feature, which tracks your personal energy consumption and savings based on your specific energy tariff.

### Savings from a typical Home Energy Management System

Our HEMs systems will enable consumers to efficiently control their energy usage.

#### 10pm-6am

Battery changes from the grid at off-peak cost (Potential to save up to 75% on electricity bills)



#### 3pm-10pm



Solar Energy stored in the batteries from day is used to offset higher evening peak time costs

#### 6am-10am

Battery used to offset higher morning peak time costs



#### 10am-3pm

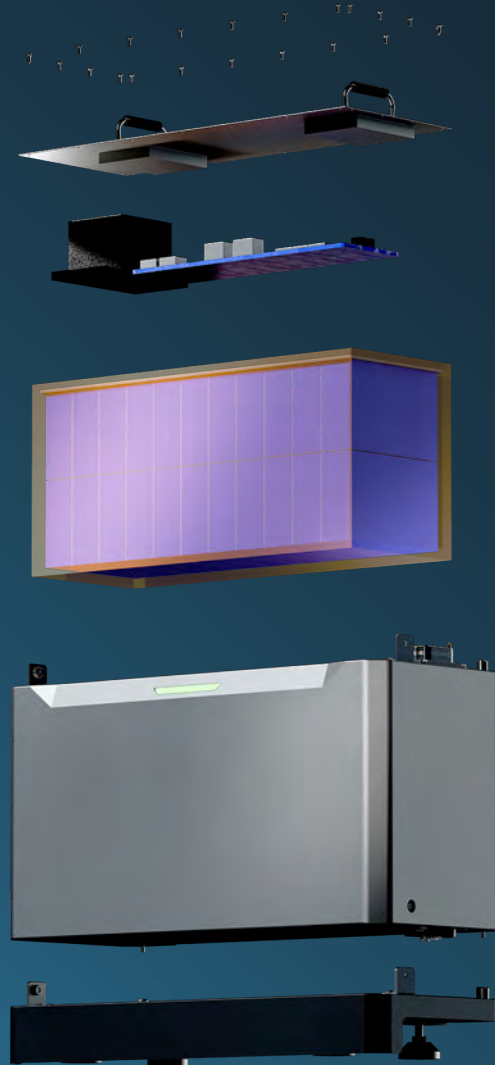


Solar Energy generated in the day, Excess energy not used by the home is stored in the batteries for use later. (Upto 50% faster payback period vs solar panels alone)





# LiFePO4 Batteries



**5.12kWh**  
per Battery module

**6000+**  
Life Cycles

**90% DoD**  
for longer lifespan

**IP65**  
Weatherproof Rating

**10 year**  
Warranty

Designed for  
Expansion Anytime

The Flow System uses LiFePO4 (Lithium Iron Phosphate) Batteries, a cutting-edge battery chemistry known for its exceptional safety, stability, and long cycle life. Unlike traditional lithium-ion batteries, LiFePO4 cells are more thermally and chemically stable, meaning they're far less prone to overheating, combustion, or degradation over time.

### Long Lifespan

Sync Energy Flow batteries last for 6000+ cycles, translating to well over a decade of daily use with minimal capacity loss, making them a smarter, more sustainable investment.

### Fire Suppression Technology

Non-toxic and thermally stable, Sync Energy Flow batteries resist overheating and are inherently fire-resistant, even under stress or high temperatures, with fire suppression built in for added peace of mind.

### High Depth of Discharge

With a high Depth of Discharge (DoD) of up to 90%, you get more usable energy per charge without compromising battery health.

### Efficient Operation

With integrated heating control to ensure the batteries deliver consistent voltage and performance across its cycle life, tested in temperatures between -20 and 60 degrees, ensuring smooth energy delivery.

### Eco-conscious Choice

Free from cobalt and heavy metals, LiFePO4 is the environmentally responsible choice in modern energy storage.

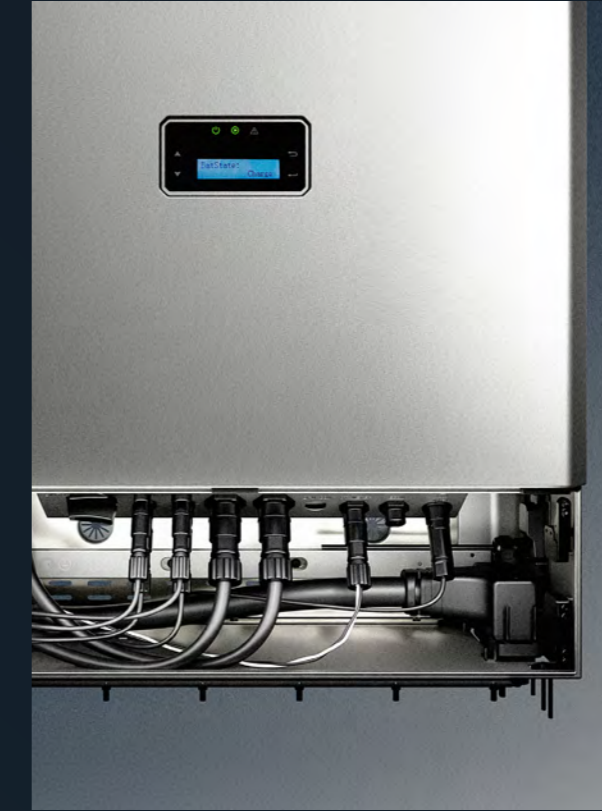
# Installation Features



### Plug and Play Battery Connections

Designed for speed and simplicity, our plug-and-play battery connectors allow each module to link seamlessly, no complex wiring or configuration required.

Whether stacking multiple units or expanding your system over time, installation is hassle-free.



### Easy Access Wiring Area

A hinged access door reveals a dedicated space for PV isolators and power connections.

With generous working room and thoughtful layout, it's designed to support a neat, professional finish, keeping all wiring discreetly hidden from view once installation is complete.



### Adjustable Mounting Base

The mounting base features four adjustable feet, making it easy to achieve a perfectly level installation, even on uneven floors.

Designed to ensure every installation looks clean, aligned, and professionally finished.

## All in One Systems

### Hybrid Inverter + Modular Battery Storage

Available in pre-configured kits with a choice of inverter size (3.6kW or 6kW) and flexible battery options (available with 1, 2, or 3 batteries), making it easy to select the right solution for all property types and energy needs.

### Faster Installation

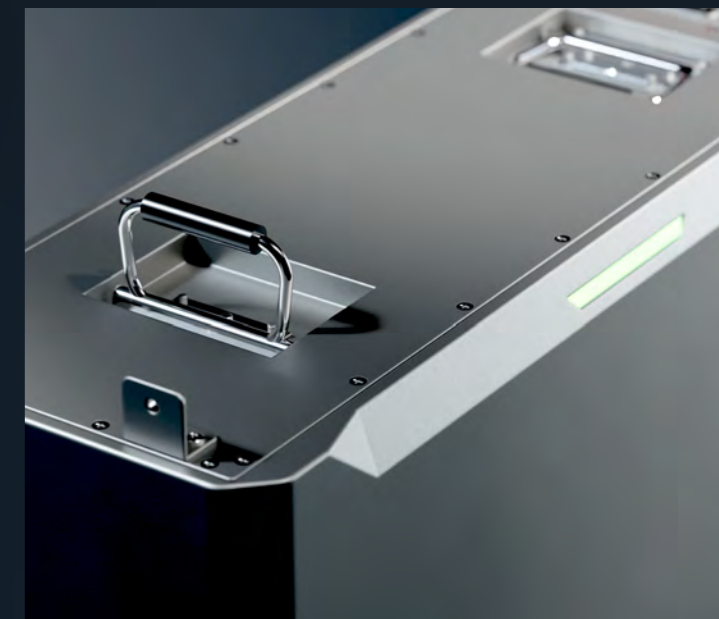
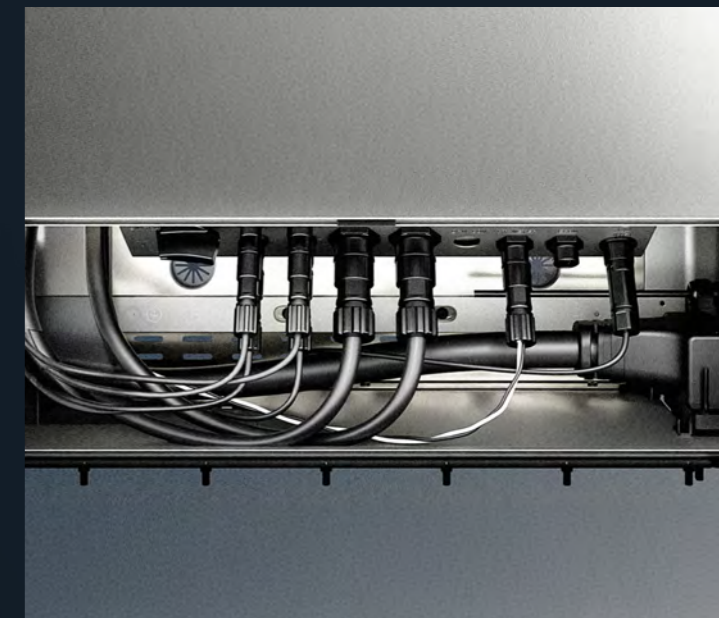
All components are designed to work together seamlessly, reducing installation time, complexity, and on-site set up.

### Scalable & Flexible

5.12kW Modular battery design allows homeowners to start with the capacity they need today, with the option to expand storage in future without changing the inverter.

### Optimised for Smarter Energy Use

The All in One system is the ideal solution whether the goal is to store solar-generated energy or maximise off-peak grid energy, reducing reliance on expensive peak-time tariffs.



# All in One Systems

A complete home energy management system combining a Hybrid Inverter and modular Battery Storage.

The System enables energy storage generated from either Solar Panels and/or The Grid.

Designed to operate both off-grid and on-grid with full grid import/export capability.



SCAN TO SEE DATA SHEET



PRODUCT CODE	SEF1A36G1	SEF1A60G1	SEF1A36G2	SEF1A60G2	SEF1A36G3	SEF1A60G3
PRODUCT DESCRIPTION	All In One 3.6kW + 1 Battery	All In One 6kW + 1 Battery	All In One 3.6kW + 2 Batteries	All In One 6kW + 2 Batteries	All In One 3.6kW + 3 Batteries	All In One 6kW + 3 Batteries
INVERTER POWER (kW)	3.6	6	3.6	6	3.6	6
NUMBER OF BATTERY MODULES	1		2		3	
BATTERY CAPACITY (kWh)	5.12		10.24		15.4	
WEIGHT (kg)	99.6		150.7		201.8	
DIMENSIONS (WITH FLOOR STAND) (H X W X D MM)	979 x 621 x 245		1288 x 621 x 245		1597 x 621 x 245	
MOUNTING OPTIONS	Wall Mounting (Inverter Only) or Floor Stand					

## MAIN FEATURES

- All in one stackable design: Hybrid inverter and battery storage
- Scalable, modular battery storage up to 35.84kWh
- PV ready, solar systems can be added at any time
- Integrated fire suppression, for safety and peace of mind
- Integrated heating below 5°C
- Integrated AC and DC surge protection
- Remote monitoring and control via Sync Energy app
- LiFePo4 batteries, with 90% depth of discharge
- IP65 rated for outdoor use
- IK10 rated
- 10 year warranty

# Hybrid Inverters

Available in 3.6kW or 6kW, our Hybrid Inverters can be installed as a solar-only solution, enabling real-time use of solar energy and export of excess generation back to the grid. Battery storage can be added later as energy needs grow.

Designed for on-grid operation, with the ability to add Battery Storage in the future.



⚡  
220-240V-50-60HZ

🔄  
HYBRID

🔋  
150%  
PV RATED

💧  
IP65  
RATING

👁️  
IK10  
RATING

🏠  
GREY  
ALUMINIUM  
RAL9007

📅  
10  
YEAR  
WARRANTY



PRODUCT CODE	SEFHI36G	SEFHI60G
PRODUCT DESCRIPTION	Hybrid Inverter 3.6kW	Hybrid Inverter 6kW
INVERTER POWER (kW)	3.6	6
PV RATED	150%	
BATTERY CAPACITY (kW)	5.12	
WEIGHT (kg)	43	
DIMENSIONS (H X W X D MM)	600 x 621 x 245	
MOUNTING OPTIONS	Wall Mounting or Floor Stand	

## MAIN FEATURES

- Stackable or wall mountable design
- PV ready, solar systems can be added at any time
- Integrated AC and DC surge protection
- 150% PV oversupply capability
- Remote monitoring & control via Sync Energy app
- Integrated PV Isolation, DC Battery and AC MCBs
- IP65 rated for outdoor use
- IK10 rated
- 10 year warranty

# Modular Battery Storage

Each 5.12kW modular battery is designed for easy stacking, with plug and play connectors and configurations available from 1 to 4 modules, ideal for storing excess solar energy or maximising off-peak electricity rates.

Thanks to the expandable design of the Sync Energy Flow system, additional Batteries can be added to either your stand alone Hybrid Inverter or your All-in-One system, to offer maximum flexibility as energy needs grow.



SCAN TO SEE DATA SHEET



PRODUCT CODE	SEFB512G1	SEFB512G2	SEFB512G3	SEFB512G4
PRODUCT DESCRIPTION	1 Battery 5.1kW	2 Batteries 10.2kW	3 Batteries 15.4kW	4 Batteries 20.5kW
INVERTER POWER (kW)	3.6	3.6	3.6	3.6
NUMBER OF BATTERY MODULES	1	2	3	3
BATTERY CAPACITY (kW)	5.12	10.24	15.4	20.5
WEIGHT (kg)	51.1	102.2	153.3	204.4
DIMENSIONS (H X W X D MM)	454 x 600 x 245	763 x 600 x 245	1072 x 600 x 245	1381 x 600 x 245
MOUNTING OPTIONS	Floor Standing			

## MAIN FEATURES

- Easy to use stackable design
- Scalable, modular battery storage up to 35.84kW
- Integrated fire suppression, for safety and peace of mind
- Remote monitoring and control via Sync Energy app
- LiFePo4 batteries, with 90% depth of discharge
- Integrated heating system for charging below 5°C
- IP65 rated for outdoor use
- IK10 rated
- 10 year warranty

# Solar Power Diverter

Our solar power diverter helps you get the most out of your solar energy by redirecting excess generation to your home's appliances, such as water heaters and electrical heating systems.

A simple, smart way to increase self-consumption and reduce reliance on imported energy.



220-240V-50-60HZ	HEATING CONTROL	<b>2X</b> OUTPUT	16A CURRENT	SOLAR CHARGING	<b>AC TRUE WAVE</b>	<b>GREY ALUMINIUM</b> RAL9007	<b>3</b> YEAR WARRANTY
------------------	-----------------	------------------	-------------	----------------	---------------------	-------------------------------	------------------------



SCAN TO SEE DATA SHEET



<b>PRODUCT CODE</b>	<b>SEFSD</b>
<b>PRODUCT DESCRIPTION</b>	Solar Power Diverter
<b>NUMBER OF OUTPUTS</b>	2
<b>MAX OUTPUT</b>	16A
<b>POWER CONTROL</b>	0 to 10A controllable output, 16A bypass
<b>TERMINALS</b>	Push fit lever terminals
<b>DIMENSIONS (H X W X D MM)</b>	194 x 240 x 75
<b>MOUNTING OPTIONS</b>	Wall mount bracket, compatible to standard single gang back box

## MAIN FEATURES

- 16Amp twin output
- Simple installation, with first fix bracket suitable for wall or single gang back box
- Allows you to boost, schedule and set time limits
- Remote monitoring and control via Sync Energy app
- True AC wave power control, adjustable power control
- Compatible with PT100 Temperature probes for target temperature control
- 3 year warranty

## Our Smallest EV Charger

### Ultra-Slim, Discreet Design

At just 37mm when recessed, Link gives you a clean, architectural finish without compromise on function or performance.

### Two-Part Design, Flexible Placement

With up to 50m between outlet and control box, Link lets you position the outlet exactly where you need it, while keeping the control unit hidden out of sight.

### Retrofittable & Easy to Install

Whether surface-mounted or recessed, Link is designed to be simple to fit. Retrofit-ready with no specialist tools required.

### Versatile Options

Choose between recessed or surface-mounted, metal or plastic control box to suit your project's needs.

### Advanced Protection as Standard

The metal control box includes a 40A MCB, Type 2 SPD, 30mA Type A RCD and 6mA DC protection, while the plastic control box comes with 30mA Type A RCD and 6mA DC protection, delivering safety, compliance, and peace of mind on every install.

### Smart Control

Easily manage charging via the Sync Energy app with OCPP 1.6J connectivity.



## Two Control Box Options. Everything else is included.

Every Link EV Charger is supplied as a complete, all-in-one kit, designed to make installation simpler and more flexible for you on site.

Choose either a **plastic control box** or a **metal control box** depending on site conditions, specification requirements or personal preference. Once that choice is made, everything else to complete the install is included in the kit.

**Each Link kit contains:**

- Your chosen control box (plastic or metal)
- Socketed outlet
- Surface mounting base
- Recessed mounting base

Both surface and recessed mounting options are supplied as standard. This means you can decide how to mount the outlet once you're on site, without carrying multiple outlet variants or placing additional orders.

The socketed outlet remains **ultra-slim at just 37 mm from the wall** when recessed, delivering a clean, professional finish regardless of the control box selected.

By supplying all mounting options in one box, Link removes unnecessary complexity from specification, ordering and installation. You can adapt onsite, confident that everything you need is already in the kit.



### Plastic Control Box

**Compact. Simple. Cost-effective.**

Best suited to standard installations where upstream protection is already in place.

- Smaller, lighter enclosure for easier handling and positioning
- Integrated Safety with 30mA AC Type A RCM + 6mA DC Sense
  - IP65 and IK08-rated enclosure



### Link EV Charger

**All in One Kit. Two Control Box Options. Install Your Way.**

Choose between plastic or metal control box, with every kit supplied complete for surface or recessed installation.



### Metal Control Box

**All protection built in. Premium Solution.**

Designed for installers who want everything integrated, or where higher protection is required.

- Built-in SPD, MCB and RCD removes need for additional upstream devices
  - Reduced consumer unit work required
  - IP65 and robust IK10-rated enclosure for tougher environments
- With spare usable ways for future expansion of additional circuits if required

## Our Smallest EV Charger

Say goodbye to bulky, obtrusive EV chargers. Link is a wall-integrated EV charging solution that combines sleek, architectural design with robust, reliable performance.

Supplied with a durable metal control box, Link comes pre-fitted with advanced safety devices, including a 40A MCB, Type 2 SPD, 30mA Type A RCD, and 6mA DC protection. It's innovative two-part design allows the compact charging socket and control box to be installed up to 50 metres apart, giving maximum flexibility in positioning.

At just 37mm when recessed, Link delivers an ultra-slim profile without compromising on power or protection, while installation is quick and retrofit-friendly with no specialist tools required.



SCAN TO SEE DATA SHEET



### MAIN FEATURES

- Ultra-Slim 37mm profile
- 7.4kW type 2 socketed output
- Patented design for compact socket outlet and separated control box
- Suitable for new build properties or retrofit
- Easy to install
- Integrated open PEN conductor protection, no earth rod required
- Remote monitoring and control via Sync Energy app
- OCPP 1.6J connectivity, free lifetime over-the-air updates
- Auto solar charge
- Tariff sense energy management feature
- Models available with Wi-Fi/LAN/4G
- IP65 rated for outdoor use
- IK10 rated
- 3 year warranty

PRODUCT CODE	EVL7MS	EVL7MSG
PRODUCT DESCRIPTION	Link charger with metal control box	
OUTPUT (kW)	7.4	
SOCKET TYPE	Type 2	
CONNECTIVITY	Wi-Fi	4G & Wi-Fi
PROTECTIVE DEVICES	40A MCB, Type 2 SPD, 30mA Type A RCD, 6mA DC protection	
DIMENSIONS (H X W X D MM)	176 x 176 x 122 / 176 x 176 x 37	
MOUNTING OPTIONS	Recessed / Surface mounted	

## Our Smallest EV Charger

Say goodbye to bulky, obtrusive EV chargers. Link is a wall-integrated EV charging solution that combines sleek, architectural design with robust, reliable performance.

This version is supplied with a lightweight plastic control box, fitted with 30mA Type A RCD and 6mA DC protection. Thanks to its two-part design, the charging socket can be positioned up to 50 metres from the control box, providing flexibility on every project. Each kit includes both recessed and surface-mounted components, so you can decide the best installation method on site.

At just 37mm when recessed, Link delivers an ultra-slim profile without compromising on power or protection, while installation is quick and retrofit-friendly with no specialist tools required.



SCAN TO SEE DATA SHEET



Surface mounting option included

PRODUCT CODE	EVL7PS	EVL7PSG
PRODUCT DESCRIPTION	Link charger with plastic control box	
OUTPUT (kW)	7.4	
SOCKET TYPE	Type 2	
CONNECTIVITY	Wi-Fi	4G & Wi-Fi
PROTECTIVE DEVICES	30mA Type A RCD, 6mA DC protection	
DIMENSIONS (H X W X D MM)	176 x 176 x 122 / 176 x 176 x 37	
MOUNTING OPTIONS	Recessed / Surface mounted	

### MAIN FEATURES

- Ultra-Slim 37mm profile
- 7.4kW type 2 socketed output
- Patented design for compact socket outlet and separated control box
- Suitable for new build properties or retrofit
- Easy to install
- Integrated open PEN conductor protection, no earth rod required
- Remote monitoring and control via Sync Energy app
- OCPP 1.6J connectivity, free lifetime over-the-air updates
- Auto solar charge
- Tariff sense energy management feature
- Models available with Wi-Fi/LAN/4G
- IP65 rated for outdoor use
- IK10 rated
- 3 year warranty

# Sync Energy | Wall Charger 2

## Socketed & Tethered

### Compact, Modern Design

A clean, compact design available in tethered or socketed options. The tethered option is thoughtfully designed to keep the cable neatly organised and the charge plug/gun holstered neatly in the centre.

### Customisable Faceplates

Choose from nine additional interchangeable faceplates to match your taste and make Wall Charger 2 truly your own.

### Advanced protection as standard

Integrated open PEN conductor protection, Type A RCD, and 6mA DC detection for complete peace of mind.

### Hassle-Free Installation

Designed with multiple cable entry points and no earth rod required, for a quick and straightforward setup.

### Smart Control

Easily manage charging via the Sync Energy App with OCPP 1.6J connectivity.



# Sync Energy | Wall Charger 2

## Socketed & Tethered

A compact and robust EV charger available in 7.4kW Socketed or Tethered options with interchangeable faceplates available in 9 additional finishes so you can make your wall charger 2 your own and built-in smart control via the Sync Energy app.

Simple to install, Wall Charger 2 features integrated safety protection with no need for an earth rod.



**7.4kW**

**5**  
MODELS

SOLAR  
CHARGING

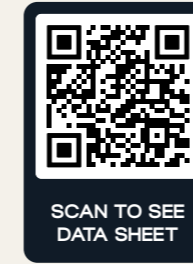
TARIFF  
SENSE

IP65  
RATING

IK10  
RATING

PEN  
PROTECTION

3  
YEAR  
WARRANTY



PRODUCT CODE	EVWC2S7G	EVWC2S7GG	EVWC2S7GGR	EVWC2T7G	EVWC2T7GG
PRODUCT DESCRIPTION	Single phase socketed			Single phase tethered	
OUTPUT (kW)	7.4			7.4	
SOCKET TYPE	Type 2 with autolock			Type 2 with 7.5m cable	
CONNECTIVITY	Wi-Fi / LAN	Wi-Fi / LAN / 4G	Wi-Fi / LAN / 4G + RFID	Wi-Fi / LAN	Wi-Fi / LAN / 4G
WEIGHT (kg)	2.39	2.39	2.39	4.32	4.32
DIMENSIONS (H X W X D MM)	305 x 201 x 115			305 x 201 x 115	
MOUNTING OPTIONS	Surface mounted			Surface mounted	

### MAIN FEATURES

- Available as type 2 socketed and tethered
- Dynamic charging, up to 7.4kW (32A)
- Interchangeable faceplates, 9 additional finishes
- Easy to install
- Integrated open PEN conductor protection, no earth rod required
- Remote monitoring and control via Sync Energy app
- OCPP 1.6J connectivity, free lifetime over-the-air updates
- Auto solar charge
- Tariff sense energy management feature
- Models available with Wi-Fi/LAN/4G+RFID
- IP65 rated for outdoor use
- IK10 rated
- 3 year warranty

# Sync Energy App

## Whole Home Connectivity

The Sync Energy App brings your entire home energy system into one intuitive App, giving you full control over how and when you use power whether from your solar panels or the grid.

Whether you're storing solar energy, managing your EV charging, or directing excess solar generated to heat your water, the app makes it easy to take charge of your energy use, all from your smartphone.

With Sync Energy, there's no need for multiple third-party apps, everything is fully integrated into one simple, smart solution.



SCAN TO  
DOWNLOAD APP



### Intuitive Dashboard

The Sync Energy App features a clean, easy-to-read dashboard that provides a real-time overview of your home's energy flow, all in one place.

Whether you're generating solar, drawing from the grid, charging your EV, or storing energy in your battery system, the dashboard presents it all in a clear, visual layout.

It's designed to be simple to understand and effortless to navigate, helping you make confident, informed decisions about how you use and manage energy in your home.

### Complete Control of Your Energy Usage

The Sync Energy App makes it easy to stay in control, you can:

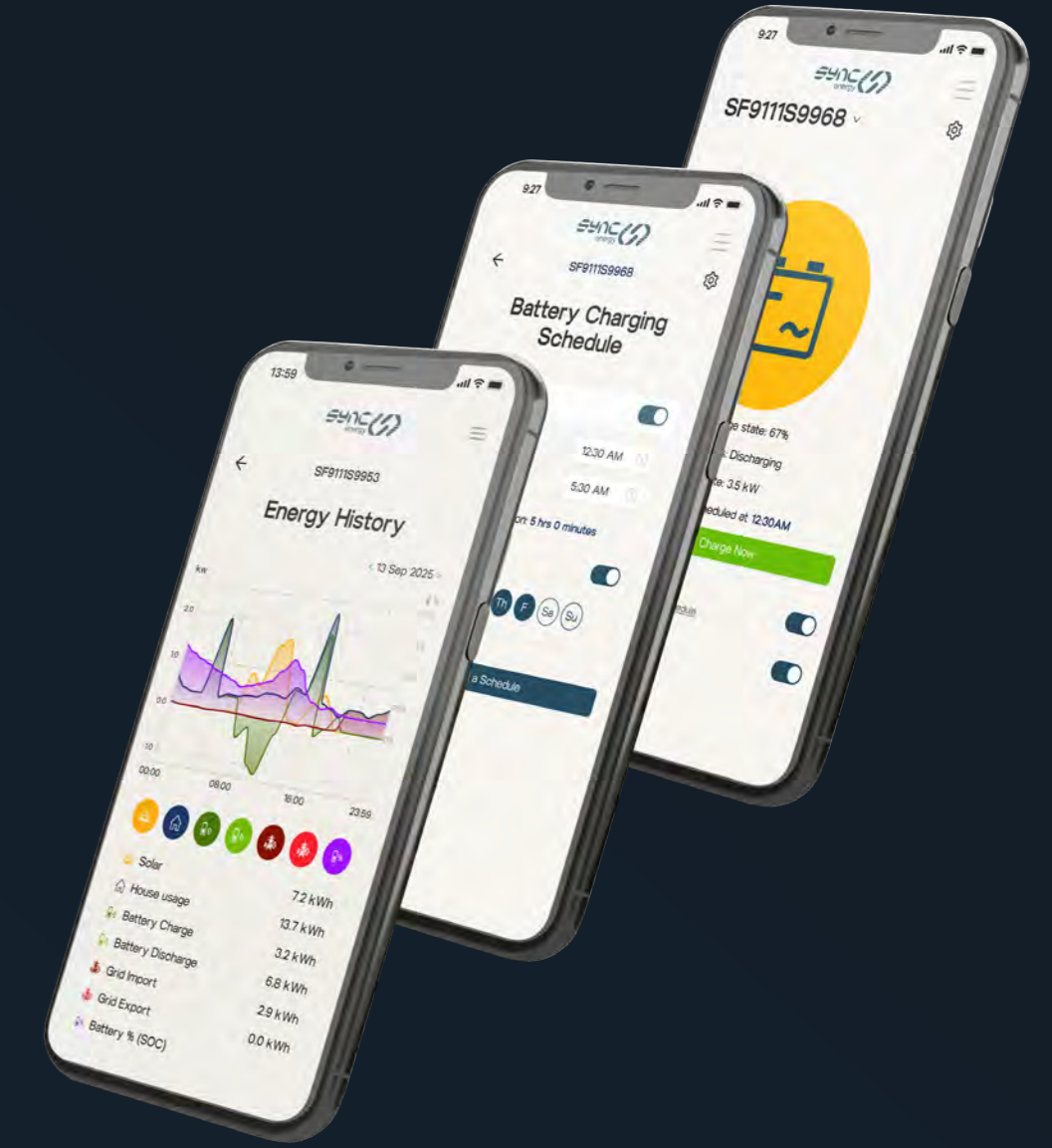
- Start, stop, or schedule EV charging
- Monitor and manage your battery storage
- Divert excess solar energy to where it's most useful
- Automate charging during low-cost, off-peak periods

Whether you're home or away, you're always connected and in control.

### Tariff Sense

Tariff Sense connects to your personal energy tariff, giving you real-time insights and control over your charging costs, highlighting the savings you're making.

By combining Tariff Sense with intelligent scheduling, you can ensure your EV or battery storage charges when energy costs are low and off-peak, helping to reduce your reliance on the expensive peak time rates.



# Sync Energy App Commissioning & Handover

A single app with a smooth handover from the installer to the end-user ensures that you'll be up and running in no time.

## Easy setup and commissioning

A clean, compact design available in tethered or socketed options. The tethered option is thoughtfully designed to keep the cable neatly organised and the charge plug/gun holstered neatly in the centre.

## Easily transfer to the customer

A clean, compact design available in tethered or socketed options. The tethered option is thoughtfully designed to keep the cable neatly organised and the charge plug/gun holstered neatly in the centre.

## Keep track of installation history

A clean, compact design available in tethered or socketed options. The tethered option is thoughtfully designed to keep the cable neatly organised and the charge plug/gun holstered neatly in the centre.



# Accessories

## Interchangeable Front Fascias

- Choose from a range of 9 colours
- Easy to fit DIY swap
- Universal fit for socketed or tethered Wall Charger 2 chargers

CODE :	COLOUR :
EVWC2TMMS	High Impact Metallic Silver
EVWC2TPSR	Signal Red
EVWC2TPRG	Racing Green
EVWC2TPDB	Deep Blue
EVWC2TPTW	Traffic White
EVWC2TRJB	Jet Black
EVWC2TPBG	Blue Grey
EVWC2TPSG	Signal Grey
EVWC2TPSY	Sandstone Yellow
EVWC2TPAG	Anthracite Grey (as standard)



## Charging Cable Carry Case

- A lightweight and practical storage option to charging cables clean and neat whilst not in use
- Suitable for all types of EV charging cables

CODE :	TYPE :
EVCASE	Carry case for EV charging cables



## EV Charging Cables

- Robust construction with end protectors
- Suitable for 16 & 32A sockets
- Weather-resistant IP65 when connected to vehicle, IP55 when not in use and end-caps applied

CODE :	TYPE :	LENGTH :
EVC22325SL	Type 2	5 Metres
EVC22328SL	Type 2	8 Metres
EVC223210SL	Type 2	10 Metres



## Mode 2 EV Charging Cables

- Provides safe and intelligent portable EV charging\*
- UK 3 pin plug to Type 2 EV plug
- Charges up-to 10A, 2.4kW (Mode 2) – up to 8 miles per charging hour
- IP65 rated (control box) – IP65 when connected to vehicle, IP55 when not in use and end-caps applied

CODE :	TYPE :	LENGTH :
EVC222135	UK 3-Pin - Type 2	5 Metres
EVC2221310	UK 3-Pin - Type 2	10 Metres



# Recommended Installation Accessories

## External IP66

- Quick and easy installation
- Type 2 SPD included
- IP66 rated protection

CODE :	TYPE :
CP5R4PS1G	IP66 External EV Circuit Protection, RCD & MCB
CP5MRDPS1G	IP66 External EV Circuit Protection, Main Switch & RCBO
CP5MPS1G	IP66 External EV Circuit Protection, Main Switch & MCB



## External IP65

- Quick and easy installation
- Type 2 SPD included
- 5 Module, IP65 rated protection
- 20mm knockouts on all sides drillable to 32mm
- Available in White or Grey

CODE :	TYPE :	COLOUR :
CFEV5A	40A 30mA Type A RCD - 40A MCB	Grey
CFEV5AW	40A 30mA Type A RCD - 40A MCB	White
CFEV6	100A Main Switch - 40A MCB	Grey
CFEV6W	100A Main Switch - 40A MCB	White
CFEV5RDA	40A 30mA Type A RCBO Double Pole - 100A Main Switch	Grey
CFEV5RDAW	40A 30mA Type A RCBO Double Pole - 100A Main Switch	White



## Internal IP20

- Metal construction, powder coated finish
- Type 2 SPD included
- 5-module enclosure

CODE :	TYPE :	COLOUR :
CFUEV5A	40A 30mA Type A RCD - 40A MCB	White
CFUEV5RDA	40A 30mA Type A RCBO Double Pole - 100A Main Switch	White
CFUEV6	100A Main Switch - 40A MCB	White



## Bidirectional RCBO

- Provides compliance to BS7671
- 30mA
- 6kA
- Positive contact status indicator
- Device capable of being locked in 'off' position using a device lock

### Type A

B Curve :	C Curve :	Rating :	Modules :
CUCRB6DPA	CUCRC6DPA	6A	1
CUCRB10DPA	CUCRC10DPA	10A	1
CUCRB16DPA	CUCRC16DPA	16A	1
CUCRB20DPA	CUCRC20DPA	20A	1
CUCRB25DPA	CUCRC25DPA	25A	1
CUCRB32DPA	CUCRC32DPA	32A	1
CUCRB40DPA	CUCRC40DPA	40A	1



### Type F

C Curve :	Rating :	Modules :
CUCRC16F	16A	2
CUCRC20F	20A	2
CUCRC25F	25A	2
CUCRC32F	32A	2
CUCRC40F	40A	2



## AC Rotary Isolators

- Plastic construction
- IP65 rated protection
- Red/Yellow padlockable handle
- Earth terminals included
- Easy cable access via M20 knockouts (top and bottom)



2 POLE :	4 POLE :	TYPE :
-	CPRSD416	16A Rotary Isolator IP65
CPRSD220	CPRSD420	20A Rotary Isolator IP65
-	CPRSD425	25A Rotary Isolator IP65
CPRSD232	CPRSD432	32A Rotary Isolator IP65
CPRSD240	CPRSD440	40A Rotary Isolator IP65
CPRSD263	CPRSD463	63A Rotary Isolator IP65
-	CPRSD4100	100A Rotary Isolator IP65

## DC Rotary Isolators

- Plastic construction
- IP66 rated protection
- Isolation of 1 or 2 PV strings
- Black padlockable handle
- Designed as an one size enclosure; 4P (4P connected as 2P jumper links are included)



4 POLE :	TYPE :
CPDC425	25A Rotary Isolator IP66
CPDC432	32A Rotary Isolator IP66



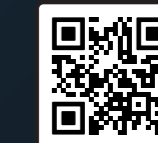
# CIRCUIT PROTECTION



## Designed for Solar Success

With the rising demand for solar energy, **BG Electrical** is at the forefront, offering circuit protection to support the seamless integration of **Photovoltaic (PV) Systems** into residential electrical setups. Our **BG Circuit Protection** devices and enclosures ensure safe, compliant, and efficient integration of both grid-supplied and solar-generated power, making them an ideal choice for solar PV projects of any scale.

Whether it's for a new installation or an upgrade, BG Electricals' solutions empower contractors to handle PV-generated electricity efficiently, ensuring regulatory compliance.



For more information scan QR code





# Support and Services



**Whether you're gearing up for a brand-new installation or boosting the performance of an existing network, we're right beside you every step of the way. Our nationwide team of Home Energy Management and EV specialists isn't just knowledgeable – they're passionate about helping you deliver flawless results.**

Think of us as your go-to project partners. Need product insights? Installation guidance? A second opinion on system design? We're here with practical advice, real-world expertise, and the confidence that only true specialists can offer.

No question is too small, no project too complex. Your dedicated expert is always just a call away – ready to help you build smarter, work faster, and install with total confidence.

**Let's power your next project together.**

## Pre-Install Support

### Onsite Support

When your project calls for hands-on collaboration, the Sync Energy projects team is ready to join you right at the heart of the job. We'll meet you, your building contractors, specifiers, and key stakeholders directly onsite, making it easier to bring everyone onto the same page and move the project forward with confidence.

Our experts don't just observe – they get involved. We'll walk the site with you, review requirements, identify opportunities, and help shape a solution that fits the space, the spec, and your installation approach. From system design to hardware recommendations and layout planning, we're there to provide practical guidance and real-world insight exactly when and where you need it.

With Sync Energy at your side, every onsite meeting becomes a chance to streamline decisions, solve challenges early, and build the most efficient, future-ready solution for your client.

### Remote Support

When you need quick answers or expert guidance, our team is only ever a call or an email away. Whether you're working through a drawing, checking system compatibility, or need advice during installation or commissioning, we're here to support you in real time.

Our specialists respond fast, offering clear, practical help that fits the way professionals work. From troubleshooting to fine-tuning designs, we'll guide you through every step so you can keep your project moving without delay.

No matter where you are or what stage you're at, Sync Energy's remote support team has your back – ready to help you install with confidence and deliver your best work, every time.

## During install support

At Sync Energy, every product we create starts with one clear priority: **making your installation as effortless as possible.** With decades of experience in designing and manufacturing electrical solutions, we understand exactly what installers need – speed, simplicity, and total confidence on the job.

That's why our entire range is engineered with a "fit-fast, work-smart" philosophy. From intuitive layouts to streamlined wiring and clever mounting options, each product is built to help you complete installs quickly and cleanly, without the usual hassle.

And once everything's in place? Commissioning couldn't be easier. Simply grab your smartphone and use our dedicated installer app for a fast, guided setup that gets your system online in minutes. No complicated procedures, no guesswork – just a smooth, modern commissioning experience right there in your hand.

### Need a refresher or a step-by-step guide?

Full instructions and quick-start steps are always available by scanning the eco-friendly in-box materials, giving you instant access without unnecessary paper waste.

At Sync Energy, we're committed to making your job simpler – from first fix to final sign-off.

## After install support

At Sync Energy, we don't believe support ends once the installation is complete – that's just the beginning. Every product in our range comes with a straightforward, installer-friendly on-site warranty designed to keep your projects running smoothly long after handover.

As long as your products are online, our dedicated support team can remotely connect to your chargers to diagnose issues, run checks, and resolve most problems there and then – saving you time, call-backs, and unnecessary site visits.

And if a remote fix isn't possible?

No stress. We'll dispatch a qualified Warranty Engineer to site to carry out repairs or replacements at no cost to you. It's our way of ensuring you, and your customers, stay fully supported – with zero friction and zero fuss.

Standard warranty terms apply. See [sync.energy](https://sync.energy) for full details.

**Scan to view additional brochures**





**PRO CHARGER**  
Commercial EV Charging Solutions





Powered by **MONTA**  
Commercial EV Management



**Ben Coombes**  
Former Co-Founder of Sync EV,  
now Sync Energy

Installing the Sync Energy Flow system was extremely straightforward thanks to clear instructions and a well-designed, modular build where every component fits together seamlessly. Its stackable design makes future battery expansion simple, which was a major reason for choosing it. Support is always available via the helpline, ensuring any issues are quickly resolved.

The Sync Energy Link EV Charger is also impressively designed, with most components hidden inside the property, leaving only a neat external socket. The app integrates solar, battery, and EV charging in one place, clearly showing generation, usage, peak times, and battery performance—making it easy to maximise self-generated energy.

I would highly recommend Sync Energy Flow to installers for its ease of installation, time savings, and the confidence it gives customers. Over its lifespan, the system will pay for itself by reducing electricity bills, future-proofing the property against rising energy costs, and supporting a more sustainable future with reliable, installer-focused products that are both robust and visually appealing.



**Ellie & Nick**  
End Users

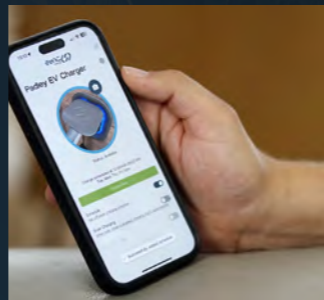
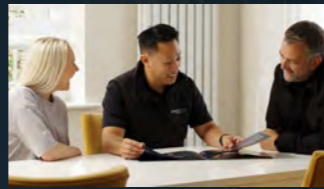
When we renovated our home, it was really important to us that we made it as sustainable as possible for the long term, without breaking the bank for our family. We've been EV drivers for a few years now and there was never any question about going back.

We'd previously used a Sync Energy charger and it performed brilliantly, so choosing Sync Energy again felt like the obvious decision. This time, we were particularly impressed by the money-saving potential of Sync Energy Flow, alongside the sleek, minimal design of the Sync Energy Link EV charger, and the fact everything can be viewed and managed in one simple app rather than juggling multiple platforms.

From an energy cost perspective, moving to an EV was our first big step. Charging off-peak has already delivered clear savings compared to traditional fuel, and that's only been enhanced by being able to see and control both battery storage and EV charging in one place.

From an investment point of view, the payback is much quicker than you might expect. You're not required to invest in solar panels straight away, but the system gives you the flexibility to add them in the future if you choose.

The overall footprint is still relatively small, which was important to us, and we're excited to see how everything integrates into the house and impacts our energy bills over time. We're ready to start saving some money.



**Adam Pavey**  
Installer

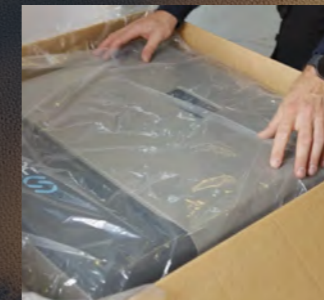
From an installation perspective, Sync Energy Flow and the Link EV Charger are well thought out and genuinely installer friendly.

Location is key with systems like this, and the garage was ideal. Being close to the consumer unit with a solid fixing surface made the install straightforward and efficient. The floor-mounted battery system went in first, with adjustable feet making it easy to get everything level. The batteries stack cleanly on top of each other with no additional interlink wiring, which saves time and reduces complexity on site.

Using the supplied templates, the inverter bracket was quick to position and secure, and the inverter itself fitted neatly into place. Cable access is well organised, with everything brought into one area, which keeps the installation tidy.

Commissioning was simple using the Sync Energy app. Setting it up, and handing control over to the homeowner took minutes. Having both the battery storage and the Link EV Charger visible and controllable in one app makes handover much easier and avoids confusion for the end user.

Overall, it's a clean install, quick to commission, and designed in a way that works just as well for the installer as it does for the customer.



# Technical Glossary

## Home Energy Management System (HEMS)

An integrated solution for monitoring and controlling energy use across the home, including solar, battery storage, EV charging, and appliances.

## Hybrid Inverter

A device that manages power from solar panels, the electrical grid, and batteries, allowing simultaneous charging, usage, and grid export.

## Battery Storage

Stores excess solar or off-peak grid electricity for later use, helping reduce reliance on the grid during peak hours.

## LiFePO<sub>4</sub> (Lithium Iron Phosphate)

A highly stable and safe type of lithium battery with a long lifespan and excellent thermal stability, used in Sync Energy storage solutions.

## DoD (Depth of Discharge)

The percentage of a battery's capacity that can be used. A 90% DoD means 90% of the battery's total capacity can be used regularly without harming its lifespan.

## PV (Photovoltaic)

Refers to solar energy systems that convert sunlight into electricity.

## Solar Array

A group of solar panels installed together to capture sunlight and generate electricity for home use.

## Tariff Sense

A smart feature of the Sync Energy App that tracks your energy tariff to optimise charging or battery use during lower-cost periods.

## IP65 Rating

Protects equipment from water jets and dust.

## IK10 rating

Indicates high impact resistance, ideal for outdoor installations.

## Plug-and-Play Connections

Preconfigured connectors that allow quick, simple installation without complex wiring.

## EV Charger (Type 2 Socket)

A charging point for electric vehicles, compatible with most modern EVs in the UK and EU.

## Surge Protection Device (SPD)

Protects your electrical system from voltage spikes, commonly included in Sync Energy products for safety.

## Open PEN Protection

A built-in safety feature in EV chargers that protects against electric shock without needing an earth rod.

## OCPP 1.6J

An open communication standard for EV chargers, ensuring compatibility with smart apps and remote software updates.

## All-in-One System

A pre-configured unit combining a hybrid inverter and battery storage for a space-saving and simplified energy management setup.

## Solar Power Diverter

Redirects excess solar energy to appliances like hot water tanks or EV chargers to maximise self-consumption.

## Commissioning

The process of setting up and activating a system for first use, typically completed by installers using the Sync Installer App.

## Energy Tariff

The rate a household pays for electricity, which can be fixed, variable, or time-of-use (based on when the energy is used).

## Grid Import/Export

Import: Drawing electricity from the national grid.

Export: Sending excess generated electricity (e.g. from solar) back to the grid, often in return for payment or credits.

## Peak & Off-Peak Tariffs

Time-of-use energy pricing where electricity is more expensive during high-demand (peak) times and cheaper during low-demand (off-peak) hours.



## UK

---

### HEAD OFFICE

General : [commercial@sync.energy](mailto:commercial@sync.energy)  
Orders : [orders@sync.energy](mailto:orders@sync.energy)  
Support : [support@sync.energy](mailto:support@sync.energy)  
87-89 Baker St, London, W1U 6RJ

### DISTRIBUTION CENTRE

Tel : +44 (0) 1952 238 100  
Email : [uk\\_sales@luceco.com](mailto:uk_sales@luceco.com)

Luceco plc  
Luceco Distribution Centre  
Stafford Park 1, Telford  
Shropshire, England, TF3 3B

## EUROPE

---

### IRELAND

Email : [sales@luceco.ie](mailto:sales@luceco.ie)

### FRANCE

Email : [fr\\_sales@luceco.com](mailto:fr_sales@luceco.com)

### ITALY

Email : [it\\_sales@luceco.com](mailto:it_sales@luceco.com)

### SPAIN

Tel : +34 93 829 55 75  
Email : [es\\_sales@luceco.com](mailto:es_sales@luceco.com)

### (EU) LUCECO SE

Parcela 12 - Nave 1 A - Pol. Ind.  
Can Balmes 08460 Sta.  
Maria de Palautordera  
Barcelona - Spain

## MIDDLE EAST & AFRICA

---

Tel : +971 4 609 1867  
Email : [mea\\_sales@luceco.com](mailto:mea_sales@luceco.com)  
Luceco Middle East FZCO  
Bldg. 5EB, Office 342  
PO Box 371128, DAFZA  
Dubai, UAE

## ASIA PACIFIC

---

### JIAXING

Tel : +86 (0) 573 8357 0200  
Email : [asia\\_sales@luceco.com](mailto:asia_sales@luceco.com)  
No 1438, Jiachuang Road  
Xiuzhou Industrial Park, Jiaxing  
Zhejiang, China, P.C. 314031

### HONG KONG

Email : [hk\\_sales@luceco.com](mailto:hk_sales@luceco.com)

## MEXICO & LATIN AMERICA

---

Tel : +52 (81) 5000 9437  
Email : [ventas@luceco.com](mailto:ventas@luceco.com)

Luceco México  
AV Lázaro Cárdenas  
#318 int 201  
Col Real San Agustín  
San Pedro Garza García  
N.L. Mexico CP 66278

## UNITED STATES

---

Email : [us\\_sales@luceco.com](mailto:us_sales@luceco.com)  
2671 Technology Drive, Suite 112,  
Louisville, KY 40299, United States

## TECHNICAL SUPPORT

---

Tel : +44 (0) 3300 249 279  
Email : [support@sync.energy](mailto:support@sync.energy)

Lines open Monday to Thursday 8.30am  
to 5pm, Friday 8.30am to 4pm with  
answer-phone service outside these hours