

Completing the established ComfortLine series

ComfortLine Compact CU distribution boards for flush and hollow wall mounting are the perfect complement to the ComfortLine range. With their subtle frame design, they blend harmoniously into all environments.

The proven ease of installation thanks to the smart and practical advantages of the ComfortLine series and the installation benefits of the ComfortLine interior installation system open up new opportunities for electricians to increase efficiency and save time.



- Subtle frame
- Low installation depth
- Easy installation in hollow walls or brick work
- Slider for quick cable entry
- N/PE Quick plug-in terminals
- QMS-Quick Mounting System with snap-in technology for installation panels
- Smart Packaging



Contact

ABB Group

Electrification Business Area
Smart Buildings Division

abb.com/lowvoltage



© Copyright 2023 ABB. All rights reserved.
We reserve the right to make technical changes or to change the contents of this document without prior notice. No part of this publication may be reproduced in any form or by any means, electronically, mechanically, by photocopying, recording, or other means without prior written notification from ABB.



ComfortLine Compact CU Flush-mounted compact distribution board

Subtle frame –
low installation depth



K-0427-11/2023-VI · 2CPC 000 427 L0101

Highlights

Simple and established

ComfortLine Compact CU small distribution board for flush and hollow wall mounting with subtle frame design completes the ComfortLine series.



01



02



03



04



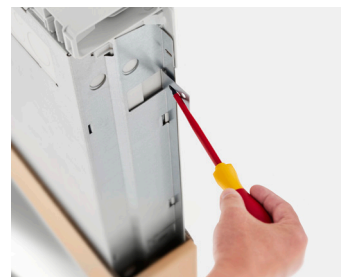
05



06



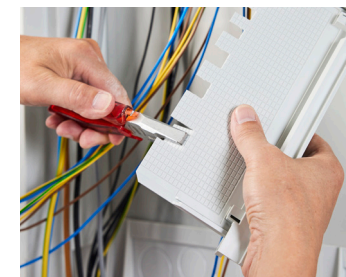
07



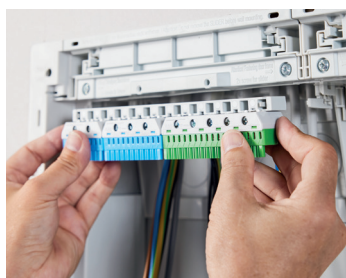
08



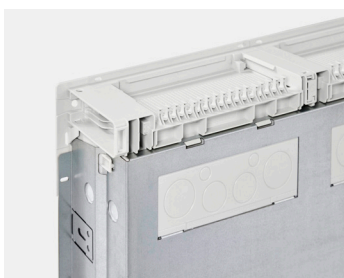
09



10



11



12



13



14



15



16

01 Subtle frame with a height of only 15 mm

02 Compensation of plaster up to 25 mm with frame fixing screws

03 Low housing depth of 110 mm

04 A rectangular cut-out is all that is required for mounting in a hollow wall

05 Hollow wall set as optional accessories

06 Quick assembly with hollow wall set: click in, tighten screws, done!

07 Hollow wall claws for stable mounting

08 Wall mounting bracket for fixing to brick work

09 Removable cable entry for quick insertion of cables; one slider at top and bottom per module width

10 Easily break out the knockouts in the slider for cable entry

11 The terminal rails with the N/PE Quick-terminals are simply clicked into place from the front; in addition, the cables can also be fixed to the cable support/strain relief fastening

12 Rear and lateral cable insertion options

13 Quick and easy snap-in of the preassembled mounting panels with the Quick Mounting System (QMS)

14 The packaging made of recycled cardboard is adapted to the work steps on the construction site

15 Reliable stain protection after the electrical installation

16 Various door variants for different applications